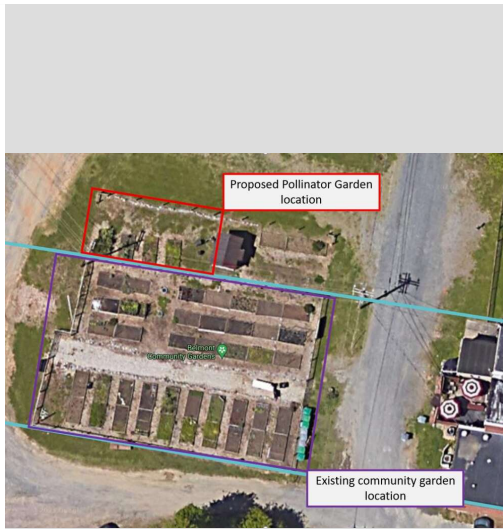


# Bee City USA - Belmont

Report on 2021

## Pollinator Habitat Creation & Enhancement

The city of Belmont's bee subcommittee has partnered with another local non-profit, Belmont Community Gardens, to establish a pollinator garden within our downtown area. Through volunteer collaboration and donations, the groups were able to partner with the city to install part one of two for the installation of the pollinator garden. Part one consisted of roughly 200 linear feet of water line to serve both the community garden and the future pollinator garden, which we are considering to be part two. While part two did not fall within the calendar year of 2021, part one did. The water line was a crucial part of current and future gardens operations. Part two planning/fundraising is underway with an expectation of opening in the late spring of 2022. Based on the timeline, we should be able to share the success during next year's application process. The installation of the waterline was a big step for the city's bee subcommittee and we are continuing to grow this program. Other pollinator habitat improvements throughout the city can be dedicated to local residents and small businesses that are bee-friendly. The subcommittee has begun to partner with local elementary schools to assist students in creating bee habitats/pollinator gardens, which is the ultimate goal of bee education and awareness.



Community Garden location and Pollinator Garden proposed location



Existing water line location



Existing Beehives Downtown



## Education & Outreach

Event 1: The Belmont Environmental Sustainability Board hosted a tree giveaway in March 2021. During the planning of the event, thought was given to the choice of the tree. The goal was to have it be a local variety, easy to grow, and it needed to be flowering, to ensure it helped members of the Belmont community to enhance their yards to be attractive to bees. The tree was chosen as the Eastern Redbud due to its prolific pink flowers that appear in the spring when bees are busy looking for food for their colony. The benefits of the Eastern Redbud are that it is one of the earliest pollinators, the flowers last for three to four weeks and flower clusters are rich in both nectar and pollen. Bee species that enjoy visiting these flowers include honeybees, bumblebees, mason bees, cuckoo bees, long-horned bees, mining bees, and sweat bees. Another advantage to this tree to help with pollinator improvement is that it starts producing flowers at a young age – sometimes as early as 4 years old. The event was marketed on the city's social media pages, and we were pleased with the response. We had 100 people sign up. Of those who signed up, 90 showed up to collect their trees. (Remaining trees were distributed to committee members for planting.) Due to Covid, the event was planned as a drive-through allowing the event to happen while ensuring people's safety. Planting instructions were emailed out to ensure maximum success in getting the trees in the ground. A side benefit that we hadn't anticipated is that we were able to make connections to local enthusiasts in the area who are working on their bee-friendly initiatives. One of the goals of the Bee Committee for 2022 is to start creating a pollinator map of all initiatives happening in our city and surrounding suburbs that we may not be aware of.

Event 2: The City of Belmont, NC in conjunction with the Bee Subcommittee of the Environmental Sustainability Board successfully planned, publicized, and hosted an educational bee webinar in the Summer of 2021 during Belmont's Pollinator Month. The webinar included three presenters – two certified beekeepers: one from the Charlotte Mecklenburg Beekeeper's Association as well as a local certified beekeeper and member of the Gaston County Beekeeper's Association, and a representative of the Xerxes Society (is that the correct organization for the last presenter?). Each presenter used their personal beekeeping experiences and relevant educational training to prepare PowerPoint presentations covering various aspects of beekeeping, and how to create and sustain a bee-friendly environment on the local level ie. 'in your backyard.' The presentations specifically included topical information related to bee anatomy, the history of bees, beehive culture, and organization, gardening organically with native, pollinator-attracting plants, avoiding the usage of pesticides and other products which are harmful to bees, and the benefits bees provide our society, including the various foods they pollinate for us. Approximately 15 residents attended this hour-long webinar. Following the speaker presentations, a brief time was allotted for questions to the presenters and the City of Belmont. This period provided for an interactive discussion on garden plants that could be installed in the yards of Belmont residents – even those without yards, who can 'container garden' to support and feed our pollinators. Also, ideas were presented on how to share this information with others in our community who had not been able to attend the webinar. Additionally, bee-related 'door prizes' were randomly awarded to those who logged in to the webinar. This webinar helped to educate the attendees on 'bee basics' and, more importantly, promote individual awareness of how our actions affect the livelihood of bees and other pollinators in Belmont. Additionally, residents were provided contact information and resources to assist them with any questions they may have following the end of the webinar.





Giveway

Earth Day  
CELEBRATION

**SAPLING  
GIVEAWAY**

March 20th, 11AM - 2PM  
115 N. Main St.  
(behind City Hall)

Scan the code below to sign up for a free Redbud tree sapling.




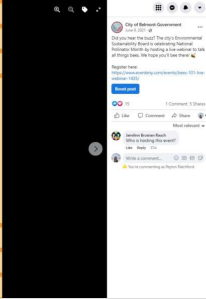
Giveway Advertisement

TUNE INTO OUR WEBINAR ON

**HOW TO:  
BEES 101**

JUNE 17, 12:00 PM

SCAN BELOW TO LEARN MORE & REGISTER

Webinar Advertisement

## Policies & Practices

Belmont has strived to make pest management practices more pollinator-friendly in the year 2021. We have implemented and maintained the integrated pest management plan attached below. Some of our practices include organic practices/products, reduced herbicide programming, and public education/awareness. These practices are within our IPM along with policy regarding pesticide storage and disposal, which complies with state law. The city's public works department annually evaluates the IPM practices and determines where there is room for improvement.

Integrated Pest Management Plan: [INTEGRATED PEST MANAGEMENT.pdf](#)

Recommended Native Plant List:

<https://www.cityofbelmont.org/documents/belmont-approved-tree-species-list/>

Recommended Native Plant Supplier List:



## INTEGRATED PEST MANAGEMENT (IPM) PLAN FOR THE CITY OF BELMONT PARKS AND FACILITIES

July 2019

**Pest Management Policy Statement**

Pests, such as rodents and insects that infest structures, may carry diseases; contaminate food and food preparation areas; damage buildings; and may cause significant structural damages. They may also pose significant risk to people, property, and the environment. Landscape pests such as weeds, insects, and diseases, pose significant problems to residents and users of properties. Pesticide use may also pose risk through unnecessary exposure to people, property, and the environment. The pest management program within the City of Belmont shall protect the health and safety of citizens and minimize damages to public parks, grounds, and structures. This program will also improve the quality of the environment by avoiding unnecessary annoyance and disruptions of daily activities. It is the policy of the City of Belmont to adopt, and review on an annual basis, an Integrated Pest Management (IPM) program to control pests on city maintained grounds.

**Roles and Responsibilities**

The IPM program will require the assistance and cooperation of all staff and residents of the City of Belmont. The City of Belmont has appointed a contact person that will serve as the liaison amongst all involved and interested parties. This individual will oversee the pest management program and ensure that the provisions of the IPM program are fulfilled. The contact person shall advise administrative staff and City Council of changes and new laws affecting the IPM policy and program, and will address all questions and concerns regarding the IPM policy and programs as well as pest management practices. The contact person will address problem areas identified during the pest inspection and monitoring process.

Name of Contact Person: Steve Martineau

Mailing Address: Po Box 431 Belmont, NC 28012

Phone Number: 980-251-0061

Email Address: [smartineau@cityofbelmont.org](mailto:smartineau@cityofbelmont.org)

**Integrated Pest Management Program and Procedures**

Page 1 of Belmont's IPM

[Learn More](#)

The screenshot shows a web browser window with the URL [cityofbelmont.org/environmental-sustainability-board/](http://cityofbelmont.org/environmental-sustainability-board/). The page features a navigation menu with items like 'Community Events', 'Businesses', 'Services', 'Residents', 'Departments', 'Government', and 'About'. A 'Citizen Boards Menu' is visible on the left. The main heading is 'Environmental Sustainability Board'. Below it, the 'Purpose and Duties' section states the board's role as an advisory committee to the City Council on environmental issues like tree protection, recycling, and energy use. A list of duties includes advising on forestry, assisting with ordinances, and community outreach. A 'Members' list includes Rob Wilhite (Chair), Doug Ehlers (Vice Chair), Rebecca Carpenter, Jennifer Fortenberry, Ted McGavran, Sharon Johnston (Ex-officio member), and two Student Members. The City of Belmont logo is also present.

Unfortunately, our committee has been meeting virtually and therefore, we do not have a photo to submit. However, I have included a screenshot of our committee members. This is on the city's official website. The URL is listed above.

