

# Bee City USA - Middletown

Report on 2021

## Pollinator Habitat Creation & Enhancement

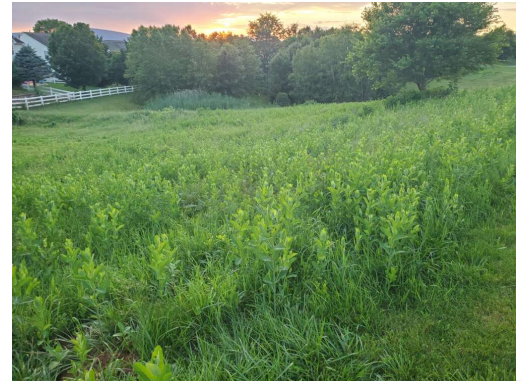
The meadow that was enhanced is on the local golf course (Richland Golf Course). Earlier in the year, the golf course superintendent mowed down the existing native milkweed that had been present there. After outrage and education from one of the committee members, the golf course became a member of the Monarchs in the Rough (an EDF/Audubon International) program – and the habitat was restored. The other habitat that was enhanced is a streamside border of mostly willow wisps. We had many volunteers including a dozen high school students that planted 50 shrubs such as silky dogwood, arrowwood and black chokeberry. Another tree and shrub planting event took place on Arbor Day in April in which volunteers helped to plant a rain garden and streamside buffer. Species planted at that time included: red maples, river birch, sycamores, swamp white oaks, bald cypress, red chokeberries, silky dogwoods, Pinxsterbloom azaleas, inkberries and button bushes. At our Christmas in the Valley event, our committee gave out one hundred seed packets containing milkweed seeds for residents to disperse in their yards. It is our hope that additional pollinator habitat is created from that initiative.



Local high school students helping with shrub planting



Local high school students helping with shrub planting along a streambank



Milkweed on local golf course being preserved

## Education & Outreach

Our committee established a pollinator garden at one of our town parks. It was planted in two stages based on when the plants were scheduled to ship. Many members helped out on both planting days. We had information about pollinator conservation with us in terms of handouts and books to peruse for residents to view during the planting events as this was in a very visible location in town. We also helped out at the pollinator garden located at the local elementary school with



planting and mulching. Many of our members put together a video about pollinator conservation that we shared with our local library and is available for viewing on our YouTube channel ([https://youtu.be/vIaKtqf\\_mdo](https://youtu.be/vIaKtqf_mdo)) and on our website (<https://www.greenmiddletown.com/pollinator-conservation>). Prior to the pandemic we had been hosting an annual Green Expo which included lots of exhibitors related to sustainability, but due to the pandemic we decided to have a virtual green expo and highlighted past participants by showcasing them on our Facebook page (<https://www.facebook.com/middletowngreenteam>) with videos and other information. Some of those highlighted are involved with pollinator conservation. Some of the resources included on our website related to pollinator conservation (<https://www.greenmiddletown.com/pollinator-conservation>) include links to: growing pollinator-friendly flowers, providing nest sites, avoid pesticides, and spreading the word about pollinators.



Committee members planting pollinator garden 4/2021



Pollinator garden planting April 2021



Article about pollinator garden establishment in local newspaper June 2021

## Policies & Practices

Unfortunately, the committee was not able to implement an IPM plan last year, but we did provide guidance to our public works staff about eliminating pesticide use in town, and we took action by requesting our mowing contractor to stop spraying weed killer in the town's dog park. We will certainly do all we can this year and moving forward to implement an IPM plan and educate our residents and others. (<https://www.greenmiddletown.com/pollinator-conservation>)

## Integrated Pest Management Plan:



Recommended Native Plant List: [List of Native Overstory Trees.docx](#)

<https://www.northcreeknurseries.com/Native-Plants>

Recommended Native Plant Supplier List:

<https://www.northcreeknurseries.com/>

---

Learn More

GreenMiddletown.com

[mcarney@ci.middletown.md.us](mailto:mcarney@ci.middletown.md.us)

<https://www.facebook.com/middletowngreenteam>



Committee members at the newly established pollinator garden

