



Bee Campus USA Annual Report Pollinator Conservation & Education 2019



College of Lake County Grayslake, Illinois

EDUCATION & OUTREACH



Ed Popelka shares All About Bees

Earth Week - Beekeeping and Honey (April 22, 2019)

Cool Learning Experience (July 31, 2019)

All About Bees (Sept. 12, 2019)

Bee Bar Extravaganzas (Oct. 11 and Dec. 20, 2019)

Weekly Farm Markets x18 (June 20-Oct.24)

POLLINATOR HEALTH & HABITAT



Planting natives in the Japanese Garden

Planting seed in prairie and wetland buffer areas, planting native grass seed, removing buckthorn, Japanese Garden planting with natives.

SERVICE LEARNING

Japanese Garden Planting and Prairie and Wetland Buffer enhancement.

CURRICULUM & CONTINUING EDUCATION

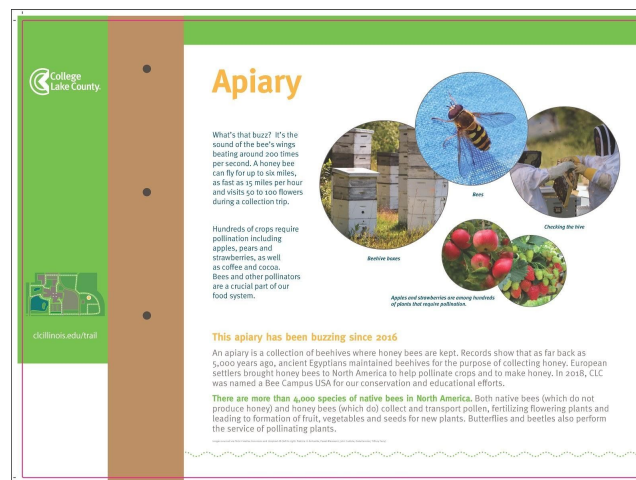
EDUCATIONAL & INTERPRETIVE SIGNAGE



CLC installed its Living Lab Trail in 2019, including outdoor signage focusing on the Apiary, Campus Farm, Prairie, Wetland, Arboretum, Bioswales and more.

More signage on the interior provides connections to food, exercise, technology, and careers.

The Living Lab Trail transforms its campus into a meta-learning experience, not just a place to learn, but also a place from which to learn.



Sample signage from the Living Lab Trail at the College of Lake County

POLICIES & PRACTICES

We have 59 acres of land that is managed natural areas and 12.5 acre arboretum with little to no pesticide applications and 1.5 acres of the campus farm that is managed organically.

Recommended Locally Native Plant Species List — <https://www.lcfpd.org/lake-county-species/>

Regional Native Plant Supplier List — www.possibilityplace.com

Pollinator Friendly Integrated Pest Management Plan — http://dept.clcillinois.edu/sus/pdf/CLC_Green_Building_Guidelines.pdf

CONTACT US!

Committee — Bee Campus Subcommittee, David Husemoller, dhusemoller@clcillinois.edu and Edward Popelka, epopelka@clcillinois.edu

Website — <https://www.clcillinois.edu/aboutclc/who-we-are/green-initiatives>

Social Media — <https://www.facebook.com/david.husemoller.7>