



Bee City USA Annual Report for 2018 Pollinator Conservation & Education



WRIGHT-PATTERSON AIR FORCE BASE, OHIO

EDUCATION & OUTREACH

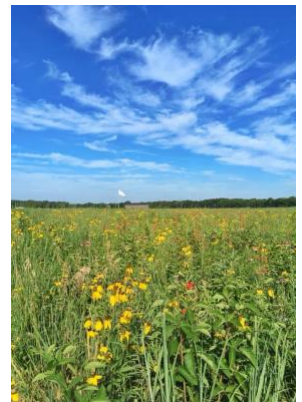


Just outside of Dayton, Wright-Patterson Air Force Base was certified as a Bee City USA in 2017—the only military installation to be certified to date. The installation is named for the Wright Brothers and is host to a restored prairie meadow (Huffman Prairie) where they tested flight in the early 1900s.

Pollinator Expo—Our committee hosted our 2nd annual Pollinator Expo at Wright Memorial during the 3rd week of June. 30+ organizations from across the state joined us to celebrate pollinators and teach the local citizens/communities what they can do to help sustain and enhance pollinator populations and their habitats. We had over 300 attendees. There were food trucks, face painting, a monarch release, a monarch themed documentary playing at the top of each hour, live demonstration hives, native plants and bee products for sale, etc.

We had four guest speakers, : Hope Taft (former first lady of Ohio), Dwight Wells (head beekeeper for the Propolis non-profit), Barbara Bloetscher (our state entomologist), and Honegmei Li-Byarlay (Bee genetics Research Professor at Central State University).

Prairie Tours—Our committee hosted Huffman Prairie State Natural Landmark tours for the youth center on base on July 24 and for the public on July 31. Approximately 40 children and 50 members of the public attended these interpretive tours, focusing on the flora and fauna of the prairie ecosystem, and highlighting the numerous pollinator species and habitat required to sustain them.





POLLINATOR HEALTH & HABITAT

Throughout the spring and fall, our committee, together with volunteers, harvested approximately 13 pounds of seeds from Huffman Prairie State Natural Landmark (with permission of the Landmark managers). This is one of the largest tallgrass prairie remnants in the region. Seeds will be utilized to enhance other areas of the prairie and also in seed mixes to start prairie habitats in other areas of the installation.



Our committee planted two certified monarch waystations on base in early June. Each measured approximately 10' X 15'. One of the waystations is being cared for by the base youth center and the other by the National Park Service.

This winter, our committee frost seeded a new pollinator plot using the seeds we harvested from Huffman Prairie State Natural Landmark.

To enhance the habitat utilized by the bees we keep on base, our committee planted several varieties of clover in the Huffman Prairie Flying Field National Historic Landmark in spring.

POLICIES & PRACTICES



Our committee is composed of several government workers from the environmental office at Wright-Patterson Air Force base, members from local non-profits, local beekeepers, and members from local park agencies. This collaboration amongst stakeholders interested in the sustainability of pollinators brings a lot of resources to the base and our plans to aid in conserving pollinator populations.

The installation's natural resources management plan includes the expansion of Huffman Prairie in addition to the creation of native habitats throughout the installation.

Given we are a federal military installation we have specific guidance in terms of IPM plans. However, we work very closely with our entomology department which has been extremely cooperative with our efforts to minimize the use of pesticides and herbicides, especially when near pollinator habitats and/or our bee hives. They have also worked with our local beekeepers to catch feral bee colonies, rather than destroy them.

Recommended Locally Native Plant Species List—We consult USFWS, Pheasants Forever, Ohio Pollinator Habitat Initiative, etc. when deciding upon native plants for projects.

Pollinator Friendly Integrated Pest Management Plan— Our IPM plans are available via URL but only to people with access to government computers.

CONTACT US!



Committee—WPAFB Pollinator Committee; Danielle Trevino, danielle.trevino.1@us.af.mil

Social Media—
<https://www.facebook.com/WrightPattersonNaturalResources>

Photo at left: Danielle Trevino is the woman on the far right.