

Bee Campus USA - East Carolina University

Report on 2020

Pollinator Habitat Creation & Enhancement

At the Town Creek Culvert, ECU Grounds Services planted native trees and shrubs (for pollinators) along the new Regenerative Stormwater Conveyance (RSC) and at Town Common. They also installed a garden by the new Student Center in memory of Kevin Sugg, a Grounds Services crew member who passed away. This space includes many native, pollinator-friendly plants. 6 student volunteers helped with tree plantings at the Town Creek Culvert, but only full-time staff worked on the establishment of the new memorial garden. ECU Grounds Services continually enhances existing pollinator habitats by simply maintaining them (removing invasive weeds, adding mulch, etc.) ECU Grounds Services also does ongoing maintenance activities on our existing Stormwater Control Measures (SCMs) or Best Management Practices (BMPs) on Main Campus as well as Health Sciences Campus (HSC), Coastal Studies Institute (CSI), and our Dental Service-Learning Clinics (SLCs).



Tree Planting with Student Volunteers and ECU Grounds Services at Town Creek Culvert.



Memorial Garden established in memory of ECU Grounds Services Employee

Education & Outreach

Due to COVID, we did two Facebook Live posts. On March 27, 2020, we demonstrated releasing a package of bees at our hive on ECU's Health Sciences Campus. On July 28, 2020, we demonstrated a honey extraction using frames from our



campus hives and working with the Neuse Regional Beekeeping Club.



Sustain ECU is at East Carolina University
Published by Chad Carwein · March 27 · Greenville, NC ·

Beekeeping Vlog #1: Releasing a package to replace the colony that swarmed in fall 2019.

4 Comments

Like Comment Share


Up Next
We currently don't have any more videos for you

Comments See All

Comment as Sustain ECU

1:02 / 6:06

Releasing a package to replace the colony that swarmed in fall 2019.



Sustain ECU
Published by Chad Carwein · July 28 ·

Honey Extracting: 7-25-2020
Beekeeping Vlog #2: Extracting honey (aka Pirate's Gold) from our ECU campus hives with the Neuse Re...
See More

2 Comments

Like Comment Share

Up Next
We currently don't have any more videos for you

Comments See All

Comment as Sustain ECU

0:06 / 3:01

Extracting honey (aka Pirate's Gold) from our ECU campus hives with the Neuse Regional Beekeepers

Courses & Continuing Education

ECU Grounds Services staff participated in continuing education by viewing a live webinar on “Bee Friendly Flowers” presented by Hannah Smith, NC Cooperative Ag Extension Agent and Horticulturist for Pitt County.





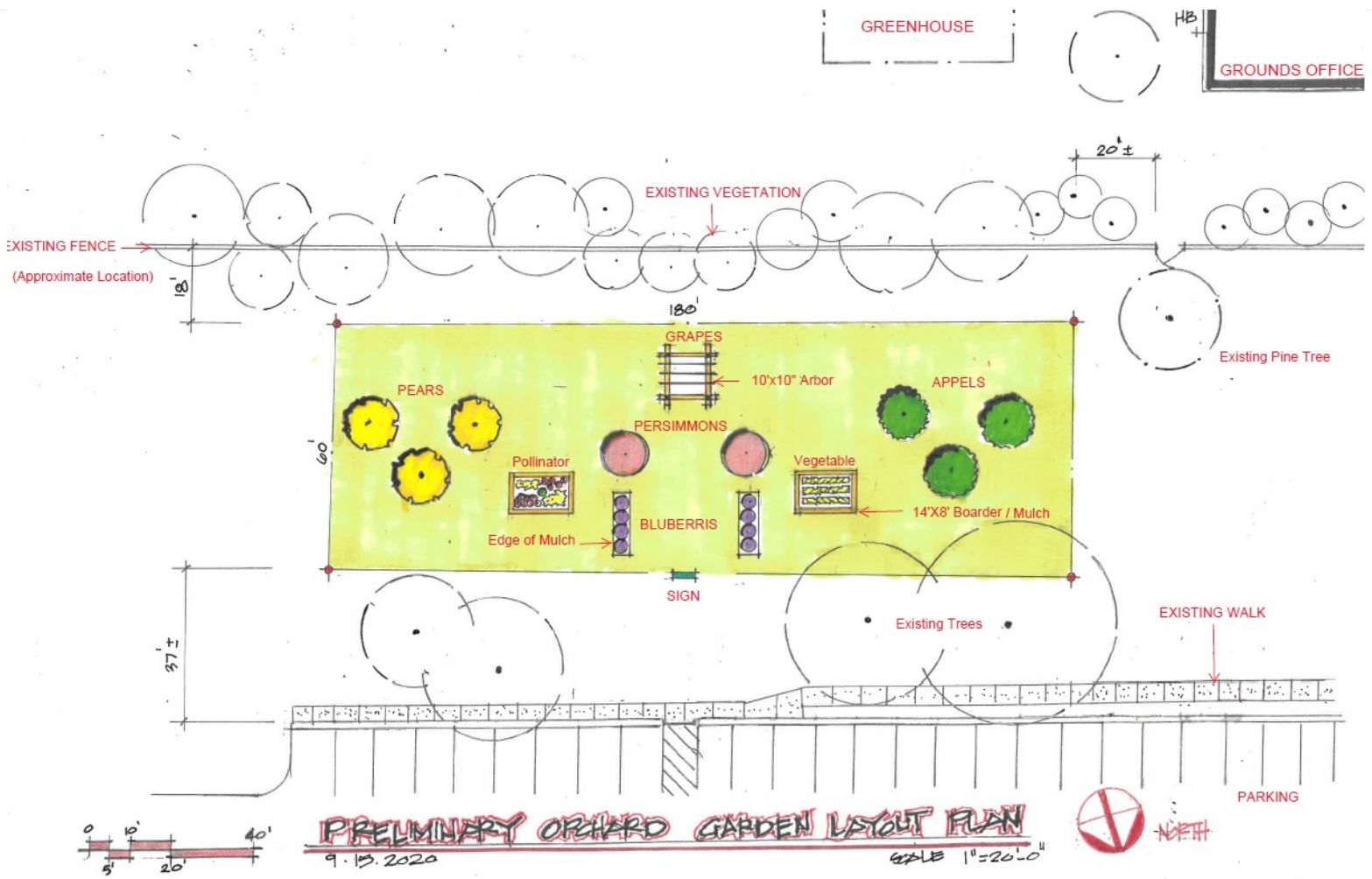
ECU Grounds Services staff view a live webinar on "Bee Friendly Flowers" presented by Hannah Smith, NC Cooperative Ag Extension Agent and Horticulturist for Pitt County.

Service-Learning

Honors College students are tasked with solving a "wicked problem" on campus or within the local community. One honors group pitched the idea of starting a student beekeeping club. They have done research on similar groups at peer institutions, looked into how to form a recognized student club, and created a list of potential activities such as events, bee school, social media outreach, etc. Their project was selected and next year they will begin implementation. Another honors group pitched the idea of establishing a Campus Orchard and Herb/Pollinator Garden at Strafford Arms. They did



research and interviewed relevant campus stakeholders to make a proposal presentation. Their project was selected and next year they will develop a budget, raise funds or apply for a grant, and work with campus grounds to purchase the trees/shrubs/plants and install the project.



Sketch of Campus Orchard proposed by an ECU Honors College Group.

Educational Signage

Due to budget restrictions as a result of COVID-19, we did not install any additional signage. However, we did finish the installation of a real-time, live-streaming camera that shows our beehives on Health Sciences Campus. See the live feed here: <https://campusoperations.ecu.edu/sustainability/pollinators/>





Livestream camera showing our active hive on ECU's Health Sciences Campus.

Policies & Practices

As stated in our IPM plan, monitoring landscape for pests and diseases is a constant ongoing process for all Grounds employees. ECU Grounds Services staff also look for beneficial insects that may already be working to control pests. The ECU Grounds crew tries not use pesticides near pollinator habitats as a general practice, especially if pollinators are present in an area or adjacent areas that could be affected by drift. Prevention is the first method of our IPM plan, which includes proper cultural and mechanical methods, proper watering, and use of healthy, pest and disease resistant native



plant species.

Integrated Pest Management Plan: [ECU IPM Program.pdf](#)

Recommended Native Plant List: [Pollinator-Friendly Native Plant List.pdf](#)

Recommended Native Plant Supplier List: [Nursery List.pdf](#)



ECU Grounds Services does not use pesticides in or around BMPs like this Constructed Wetland or the Feed A Bee Habitat located behind it.

Learn More





Members of our committee giving the Pirate "ARGGHHH" in a group photo of the ECU Sustainability Committee

