

Bee City USA - Tualatin

Report on 2021

Pollinator Habitat Creation & Enhancement

16 events were held in Tualatin in 2021 that enhanced pollinator habitat. 9 of those events were planting events where native trees shrubs and flowering herbaceous plants were installed. The remaining 7 events were site preparation for future plantings (invasive species removal) and restoration site follow up care (watering / invasive removal).



Put Down Roots in Tualatin



Put Down Roots in Tualatin

Education & Outreach

Through the Put Down Roots in Tualatin program, the City prepared half-acre site for restoration at Jurgens Park. In October and November two planting events were held where 105 volunteers planted and mulched 900 native trees and pollinator friendly shrubs. Additionally Jurgens Park Community garden was planted and maintained by volunteers from June through September. In this garden herbs, flowers and vegetables were planted to create a pollinator friendly demonstration garden.





Volunteers watering native plantings.

Policies & Practices

The most prolific invasive weed species we are tasked with managing in the Willamette Valley (Tualatin) is Himalayan Blackberry. Himalayan Blackberry has taken over many natural areas, particularly areas in and near urban development as we have here in metro Portland. Each year we designate some of these natural areas to be improved and “restored” with native plant species. The most efficient and economical control measure to reduce and contain the Blackberry is to apply a post emergent herbicide. Over the past two years we have transformed an approximately one half acre of park property from turf requiring regular mowing, to native pollinator plants requiring little to no water, no mowing, and no pesticides are used. Our standards of care and cultural practices on our sports and recreation fields include proper watering, fertilizing, aeration, and frequent (2x per week) mowing to improve the overall health of the turf grass. This approach helps



to insure healthy grass plants that naturally compete and restrict the potential for undesirable weed species to encroach our sports field assets, and therefore, reducing the potential need for pesticide use.

Integrated Pest Management Plan: [Tualatin 2020 IPM statement.docx](#)

Recommended Native Plant List: [plant-request-form.pdf](#)

<https://www.tualatinoregon.gov/recreation/bee-city-usa%C2%AE-city-tualatin>

Recommended Native Plant Supplier List: [Beaverlake Nursery Availability Spring 2021 \(\(1\).xlsx](#)

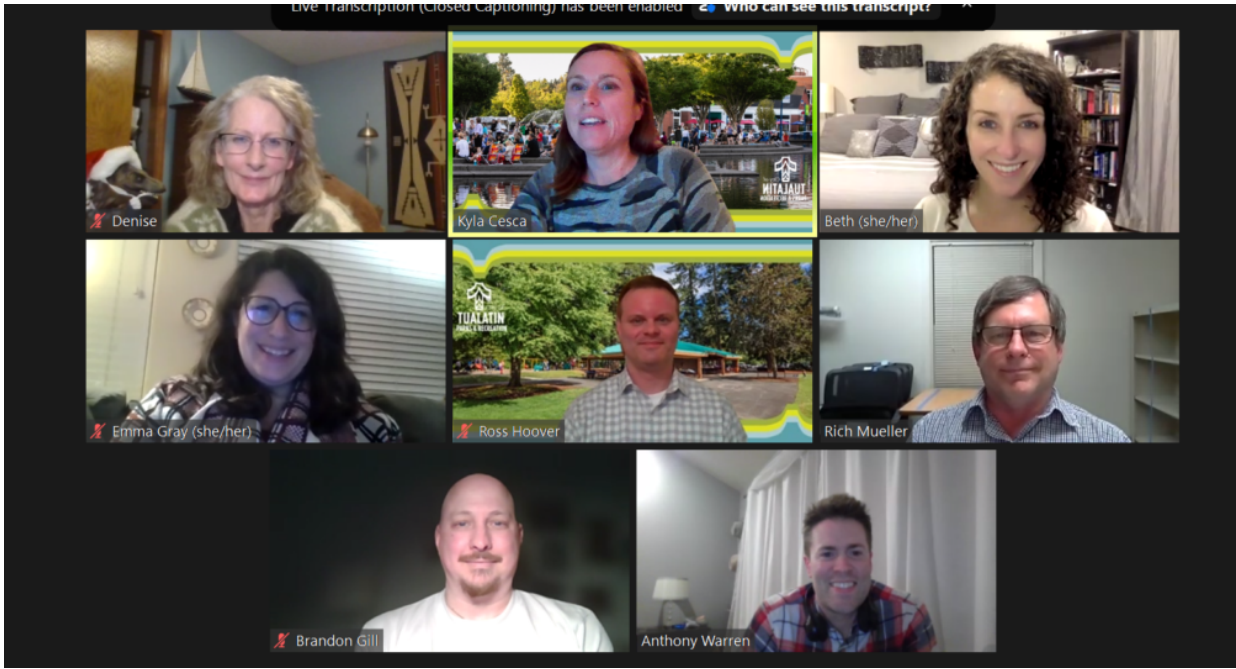
<https://www.tualatinoregon.gov/recreation/bee-city-usa%C2%AE-city-tualatin>



City of Tualaitn Parks Maintenance Staff

Learn More





Tualatin Park Advisory Committee

