



Bee Campus USA Annual Report Pollinator Conservation & Education 2019



Raritan Valley Community College Branchburg, New Jersey

EDUCATION & OUTREACH

Hans de Kroon hosted a “Insect Armageddon” seminar about his research, 11/23/19

POLLINATOR HEALTH & HABITAT



Students planted native seedlings in a field near the campus stream.

Students worked on the campus rain garden and a community rain garden, removed invasive species, planted native saplings, maintained a deer enclosure, and planted a vegetable garden.

Students at the childcare center planted butterfly gardens.

Facilities planted native trees and spread a native meadow flower seed mix on an exposed area.

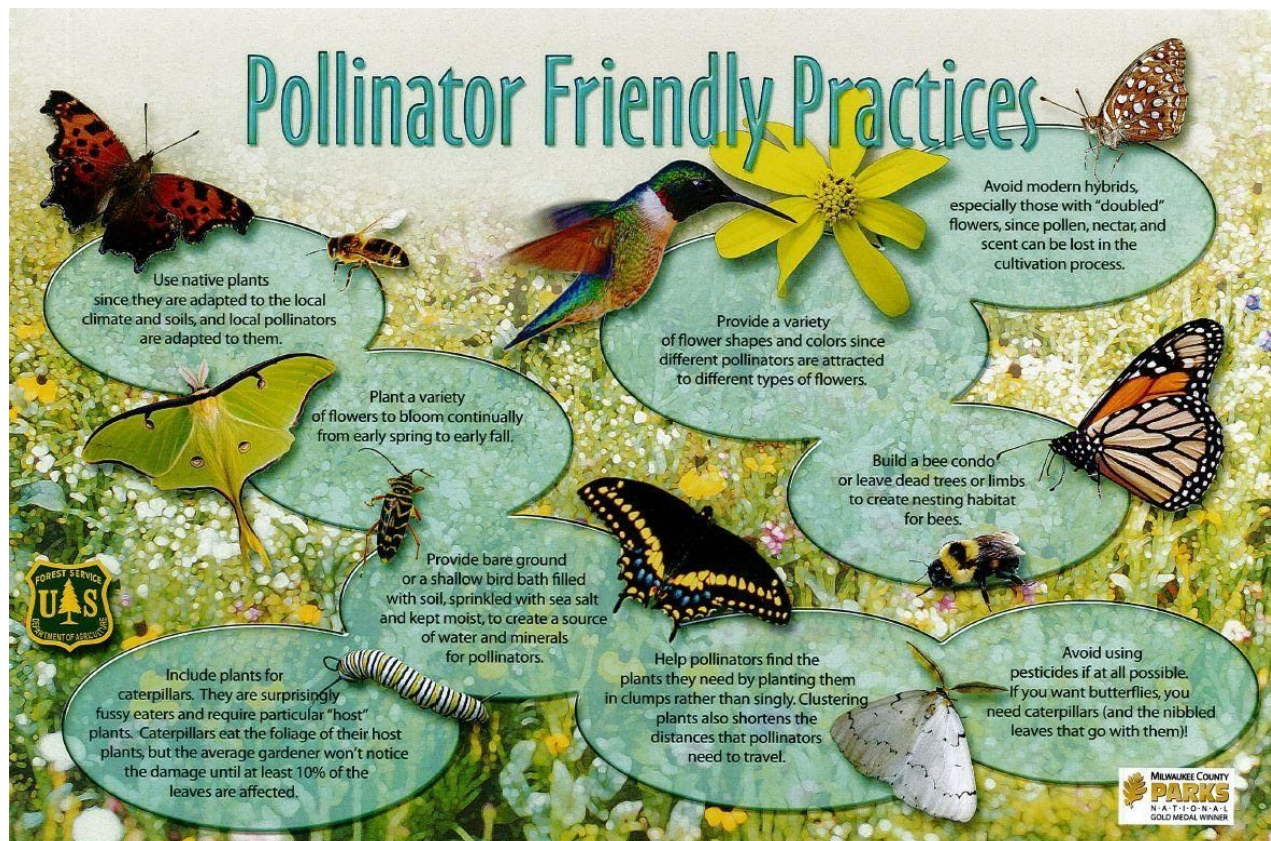
SERVICE LEARNING

Each fall and spring semester ENVI 102 students learn about the benefits of rain gardens for stormwater mitigation as well as providing habitat for pollinators and wildlife. The students are trained in rain garden maintenance and perform several hours of maintenance in rain gardens on campus and in the local community. Maintenance activities involve removing invasive species so that perennial native wildflowers are able to persist and attract pollinators.

CURRICULUM & CONTINUING EDUCATION

Each fall and spring semester ENVI 102 (Environmental Science and Sustainability) students learn about the benefits of rain gardens for stormwater mitigation as well as providing habitat for pollinators and wildlife. The students are trained in rain garden maintenance and perform several hours of maintenance in rain gardens on campus and in the local community. Maintenance activities involve removing invasive species so that perennial native wildflowers are able to persist and attract pollinators. The Botany and Ecology courses also cover material on pollinator plants, including landscape ecology and modern environmental problems, plant ecology, and conservation. The Plants, Humans & the Environment course covers the effects of human activities on plants and the environment.

EDUCATIONAL & INTERPRETIVE SIGNAGE



We have posted these signs in pollinator gardens by the Planetarium and Theater

POLICIES & PRACTICES

We do not use pesticides except as needed near or in our buildings, and we follow IPM practices.

Recommended Locally Native Plant Species List —

https://www.raritanval.edu/sites/default/files/aa_PDF%20Files/8.x%20General%20Information/RVCC%20Native%20Pollinator%20Plant%20List.pdf

Regional Native Plant Supplier List —

<https://www.siteone.com/store/639/?searchtext=08876&miles=100>

Pollinator Friendly Integrated Pest Management Plan —

https://www.raritanval.edu/sites/default/files/aa_PDF%20Files/8.x%20General%20Information/ipm_plan.pdf

CONTACT US!

Committee — Environmental Sustainability Committee, Susan Dorward,
susan.dorward@raritanval.edu

Website — not available

Social Media — <https://www.facebook.com/RaritanValleyCC/>